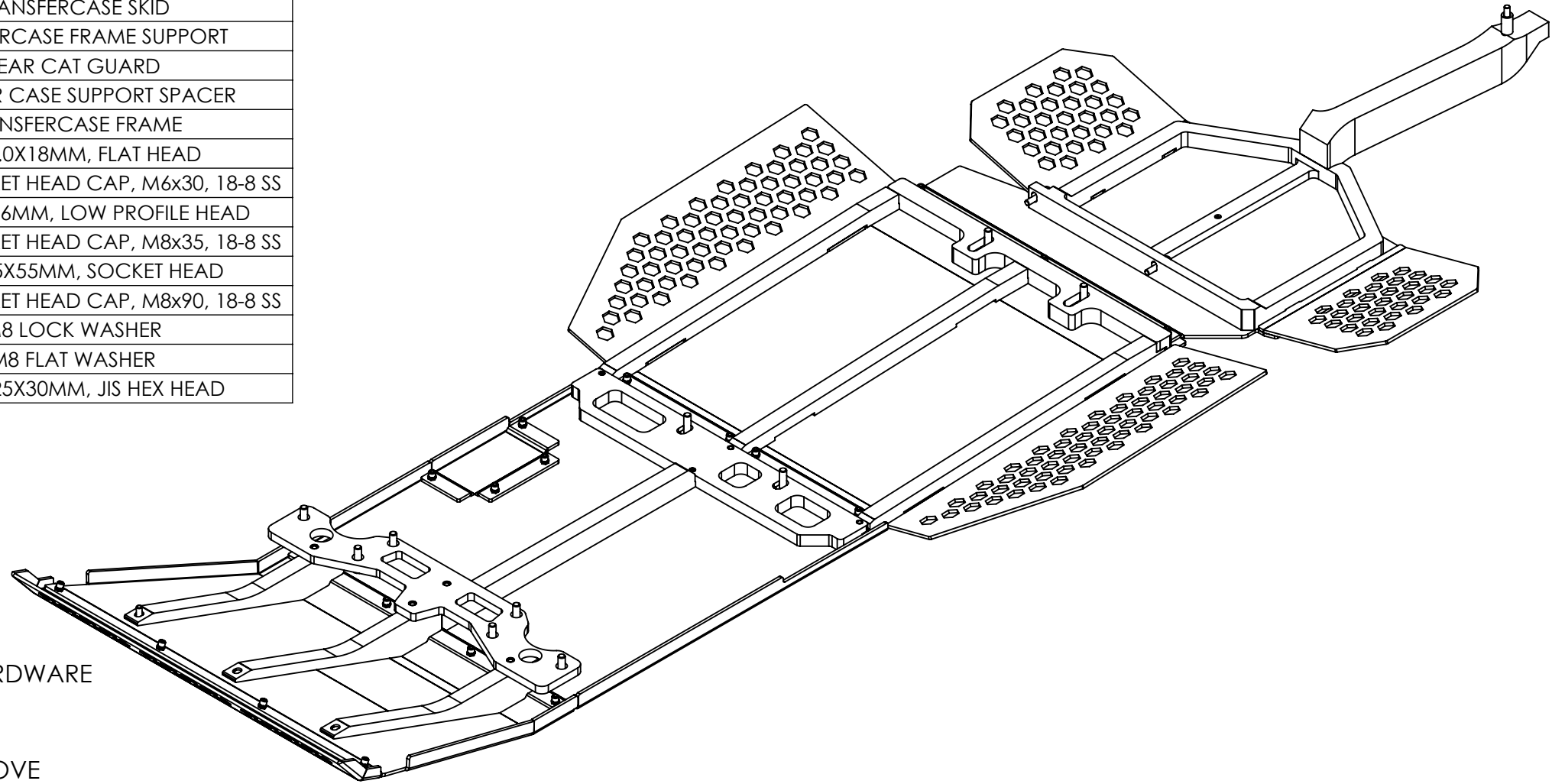


ITEM	QTY.	PART NUMBER	DESCRIPTION
1	1	OLP-0001	FRONT CROSSMEMBER MOUNT
2	3	OLP-0002	FRONT BRACE
3	1	OLP-0005	OIL FILTER ACCESS PANEL
4	1	OLP-0006	MIDDLE CROSSMEMBER MOUNT
5	1	OLP-0007	ENGINE BRACE
6	1	OLP-0010	ENGINE SKID
7	1	OLP-0012	OIL DRAIN ACCESS PANEL
8	1	OLP-0015	CAT GUARD, DRIVER SIDE
9	1	OLP-0016	CAT GUARD, PASSENGER SIDE
10	3	OLP-0022	TRANSMISSION BRACE
11	1	OLP-0023	TRANSMISSION SKID
12	1	OLP-0045	TRANSMISSION BRACE MOUNT
13	1	OLP-0004-2	FRONT SKID
14	1	OLP-108	POWER STEERING GUARD
15	1	OLP-0054	TRANSFERCASE SKID
16	1	OLP-0055	TRANSFERCASE FRAME SUPPORT
17	2	OLP-0057	REAR CAT GUARD
18	1	OLP-0058	TRANSFER CASE SUPPORT SPACER
19	1	OLP-0059	TRANSFERCASE FRAME
20	74	SF6X18SS	M6X1.0X18MM, FLAT HEAD
21	2	BSH6X30SS	SCREW, SOCKET HEAD CAP, M6x30, 18-8 SS
22	3	BSH8X16LOWSS	M8X1.25X16MM, LOW PROFILE HEAD
23	2	BSH8X35SS	SCREW, SOCKET HEAD CAP, M8x35, 18-8 SS
24	4	BSH8X55PSS	M8X1.25X55MM, SOCKET HEAD
25	1	BSH8X90SS	SCREW, SOCKET HEAD CAP, M8x90, 18-8 SS
26	2	WL8SS	M8 LOCK WASHER
27	2	WF8SS	M8 FLAT WASHER
28	10	BF10X1.25X30CLZ	M10X1.25X30MM, JIS HEX HEAD



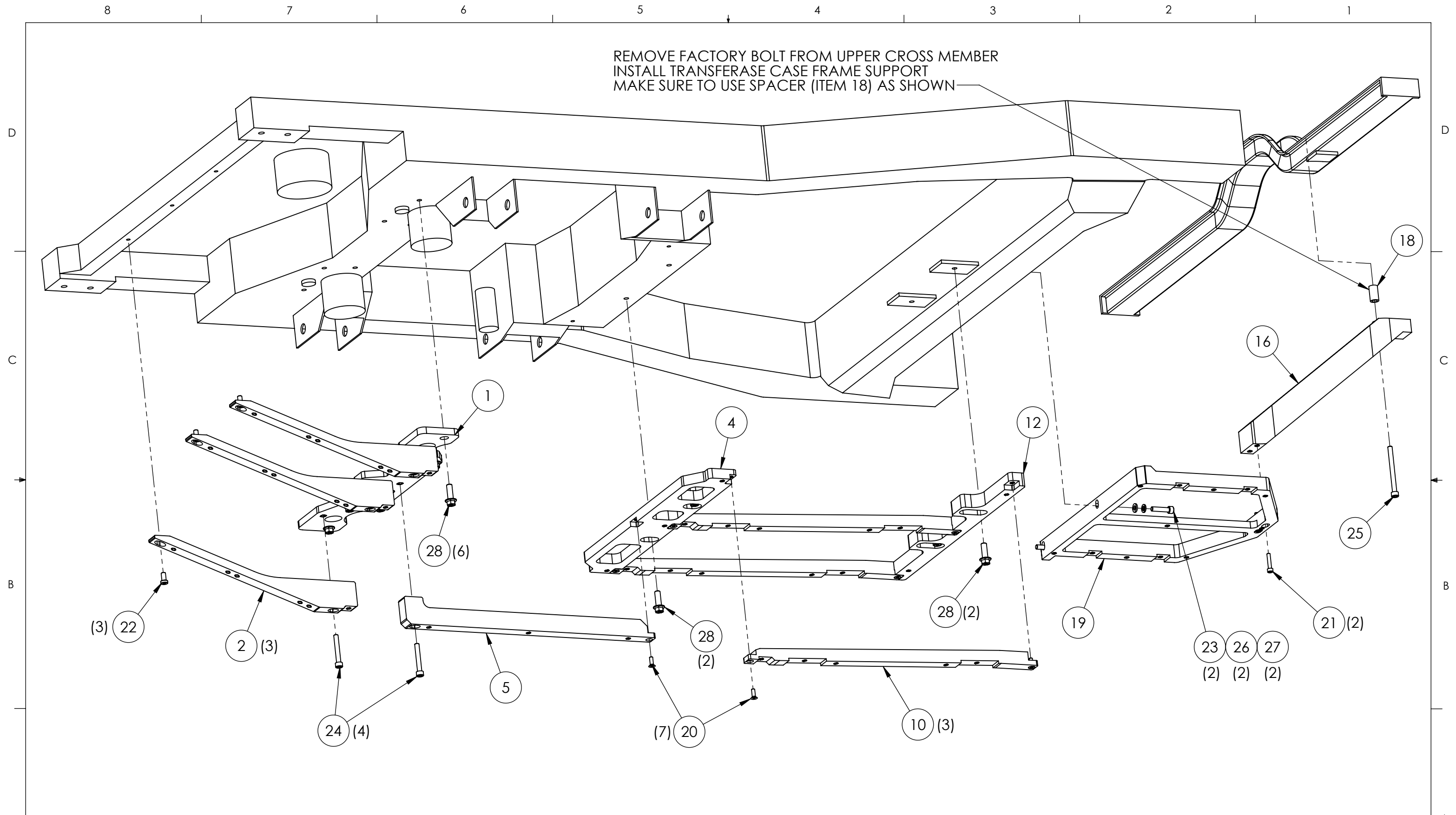
NOTES:

1. USE LOCTITE\THREAD LUBRICANT ON ALL HARDWARE
2. DON'T USE IMPACT GUNS\POWER TOOLS TO INSTALL HARDWARE
3. LEAVE HARDWARE LOOSE UNTIL EVERYTHING IS ALIGNED
4. ALL HARDWARE IS METRIC AND EXTRAS ARE PROVIDED
5. REPLACEMENT HARDWARE CAN BE PURCHASED FROM WWW.BELMETRIC.COM USING PART NUMBERS FROM ABOVE
6. 3D MODEL AVAILABLE AT EE-OFFROADING.COM

RECOMMENDED TORQUE	
SIZE	FT-LBS
M6	6
M8	15
M10	40

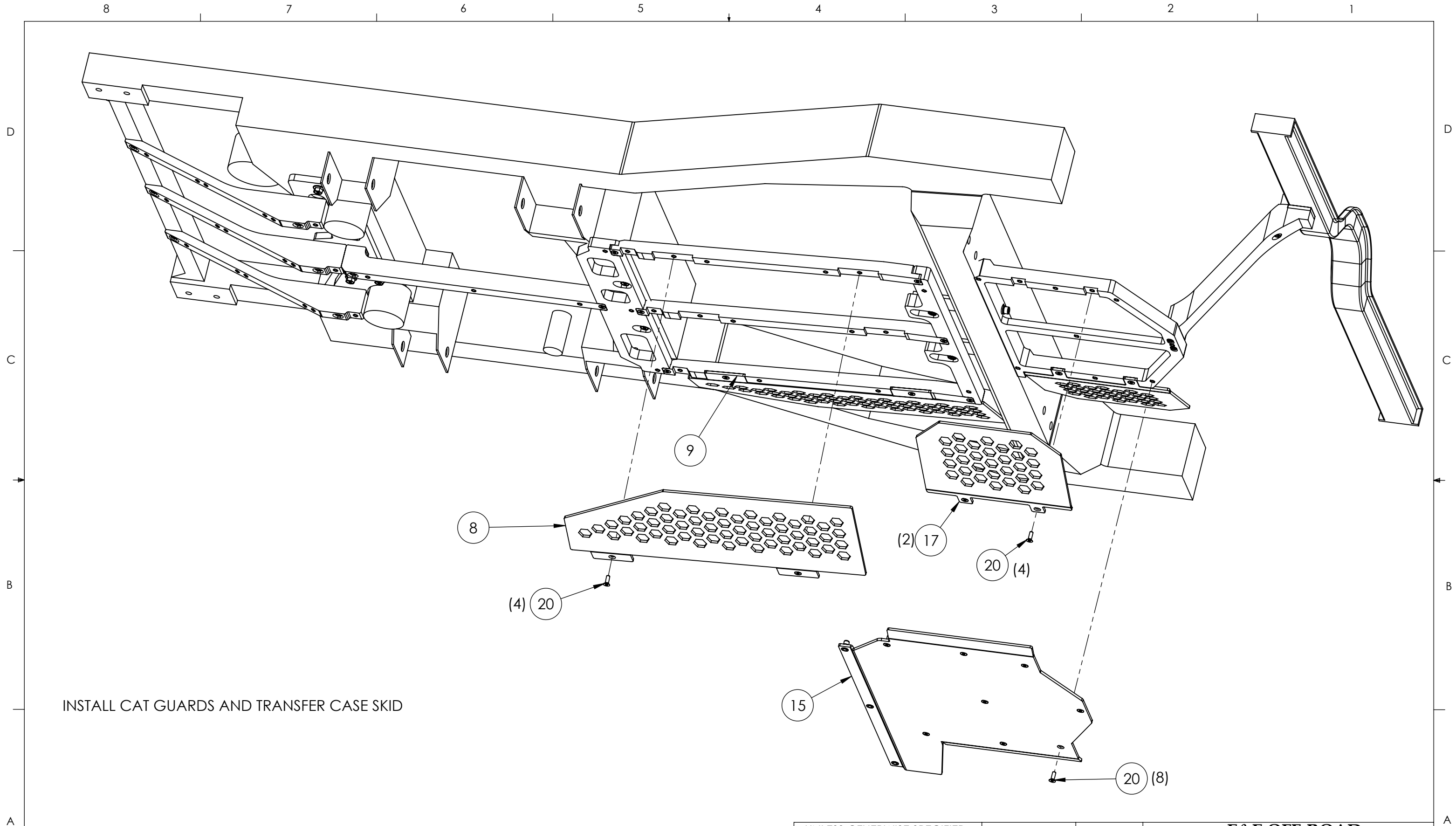
UNLESS OTHERWISE SPECIFIED: ALL DIMENSIONS ARE IN INCHES		DESIG: O.R.	8/9/23	E&E OFF-ROAD LAS VEGAS, NV	
TOLERANCES:		APV: E.A.	8/9/23		
DECIMALS	ANGULAR	MATL: N/A		TITLE: INSTALL INSTRUCTIONS	
.X ±.1	± 1°	FNSH: N/A		SIZE	REV
.XX ±.01				B	E
.XXX ±.005					
TOLERANCING PER ASME Y14.5				200 SERIES SKIDS	
				SCALE: 1:8	WEIGHT: 74.82 5lbs
				SHEET 1 OF 8	

REMOVE FACTORY BOLT FROM UPPER CROSS MEMBER
 INSTALL TRANSFERASE CASE FRAME SUPPORT
 MAKE SURE TO USE SPACER (ITEM 18) AS SHOWN



LEAVE ALL HARDWARE LOOSE FOR NOW.
 THE MORE TIME YOU SPEND MAKING SURE THE SUB FRAME IS
 ALIGNED CORRECTLY THE EASIER THE SKID PLATES WILL INSTALL.

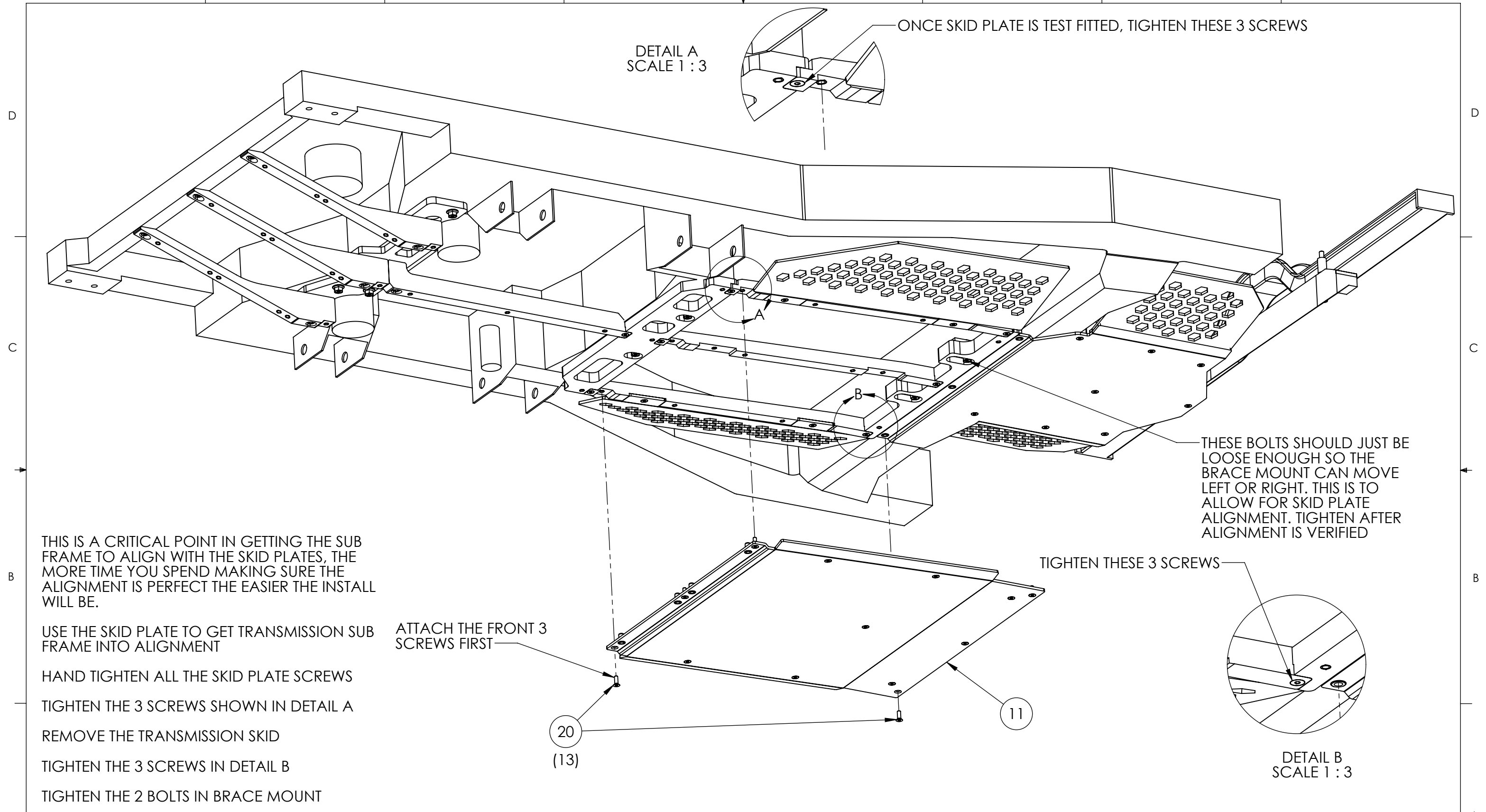
UNLESS OTHERWISE SPECIFIED: ALL DIMENSIONS ARE IN INCHES TOLERANCES: DECIMALS .X ±.1 .XX ±.01 .XXX ±.005 TOLERANCING PER ASME Y14.5	DESIG: O.R.	8/9/23	E&E OFF-ROAD LAS VEGAS, NV	
	APV: E.A.	8/9/23		
	MATL: N/A		SIZE B	DWG. NO. 200 SERIES SKIDS
	FNSH: N/A		SCALE: 1:6.5	WEIGHT: 74.82 5lbs
				REV E
				SHEET 2 OF 8



INSTALL CAT GUARDS AND TRANSFER CASE SKID

UNLESS OTHERWISE SPECIFIED: ALL DIMENSIONS ARE IN INCHES		DESIG: O.R.	8/9/23	E&E OFF-ROAD LAS VEGAS, NV	
TOLERANCES:		APV: E.A.	8/9/23		
DECIMALS	ANGULAR	MATL: N/A		SIZE	REV
.X ±.1	± 1°	FNSH: N/A		B	E
.XX ±.01				DWG. NO. 200 SERIES SKIDS	
.XXX ±.005				SCALE: 1:6.5 WEIGHT: 74.82 5lbs	
TOLERANCING PER ASME Y14.5				SHEET 3 OF 8	

8 7 6 5 4 3 2 1



DETAIL A
SCALE 1 : 3

ONCE SKID PLATE IS TEST FITTED, TIGHTEN THESE 3 SCREWS

THESE BOLTS SHOULD JUST BE LOOSE ENOUGH SO THE BRACE MOUNT CAN MOVE LEFT OR RIGHT. THIS IS TO ALLOW FOR SKID PLATE ALIGNMENT. TIGHTEN AFTER ALIGNMENT IS VERIFIED

TIGHTEN THESE 3 SCREWS

DETAIL B
SCALE 1 : 3

THIS IS A CRITICAL POINT IN GETTING THE SUB FRAME TO ALIGN WITH THE SKID PLATES, THE MORE TIME YOU SPEND MAKING SURE THE ALIGNMENT IS PERFECT THE EASIER THE INSTALL WILL BE.

USE THE SKID PLATE TO GET TRANSMISSION SUB FRAME INTO ALIGNMENT

HAND TIGHTEN ALL THE SKID PLATE SCREWS

TIGHTEN THE 3 SCREWS SHOWN IN DETAIL A

REMOVE THE TRANSMISSION SKID

TIGHTEN THE 3 SCREWS IN DETAIL B

TIGHTEN THE 2 BOLTS IN BRACE MOUNT

INSTALL TRANSMISSION SKID AND TIGHTEN THE 13 SCREWS THAT HOLD THE TRANSMISSION SKID TO THE SUB FRAME

ATTACH THE FRONT 3 SCREWS FIRST

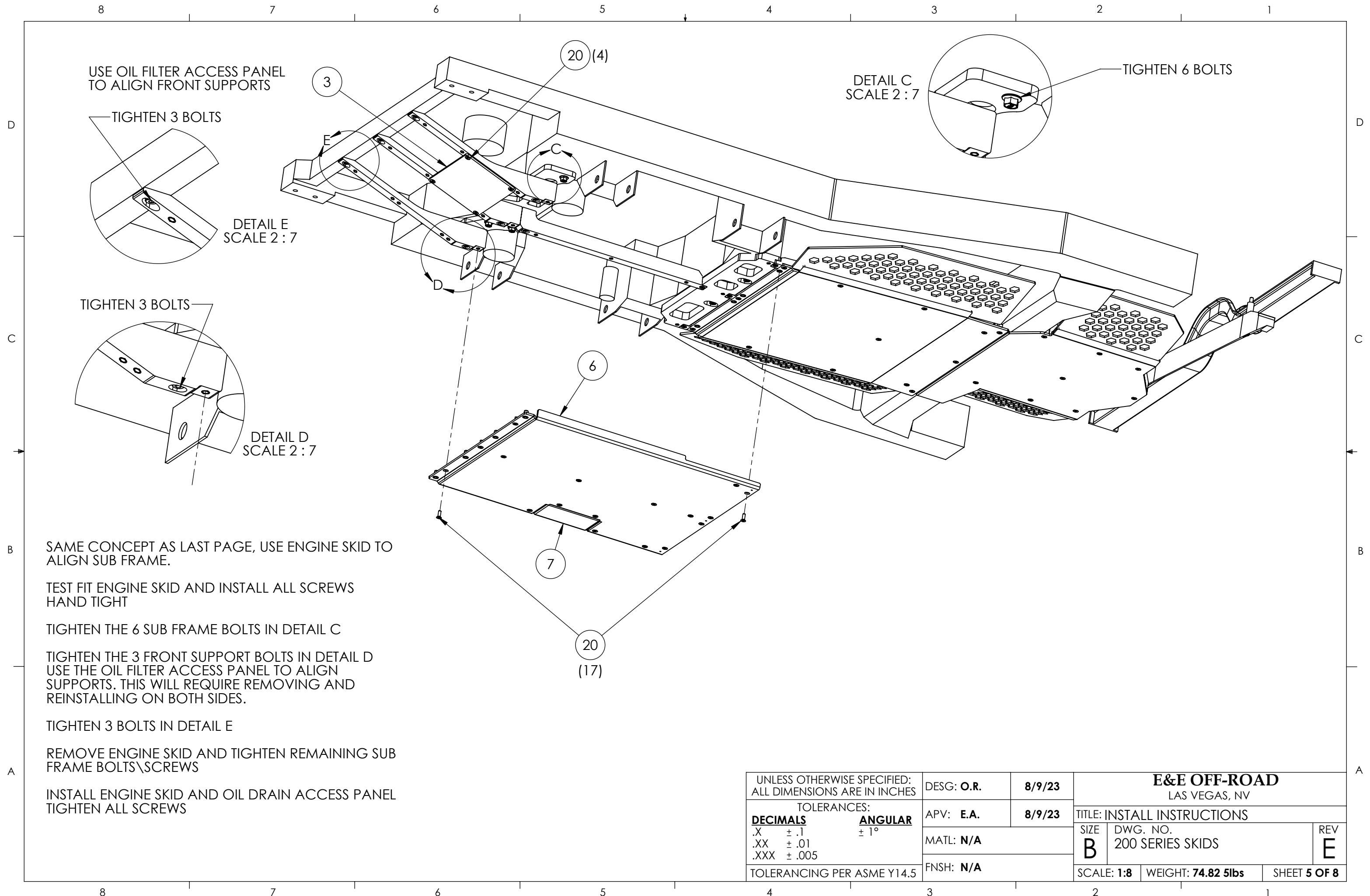
20

(13)

11

UNLESS OTHERWISE SPECIFIED: ALL DIMENSIONS ARE IN INCHES		DESIG: O.R.	8/9/23	E&E OFF-ROAD LAS VEGAS, NV		
TOLERANCES:		APV: E.A.	8/9/23			TITLE: INSTALL INSTRUCTIONS
DECIMALS	ANGULAR	MATL: N/A		SIZE	DWG. NO.	REV
.X ±.1	± 1°	FNSH: N/A		B	200 SERIES SKIDS	E
.XX ±.01				SCALE: 1:6.5	WEIGHT: 74.82 5lbs	SHEET 4 OF 8
.XXX ±.005						
TOLERANCING PER ASME Y14.5						

8 7 6 5 4 3 2 1



USE OIL FILTER ACCESS PANEL TO ALIGN FRONT SUPPORTS

DETAIL C SCALE 2:7

TIGHTEN 6 BOLTS

TIGHTEN 3 BOLTS

DETAIL E SCALE 2:7

TIGHTEN 3 BOLTS

DETAIL D SCALE 2:7

SAME CONCEPT AS LAST PAGE, USE ENGINE SKID TO ALIGN SUB FRAME.

TEST FIT ENGINE SKID AND INSTALL ALL SCREWS HAND TIGHT

TIGHTEN THE 6 SUB FRAME BOLTS IN DETAIL C

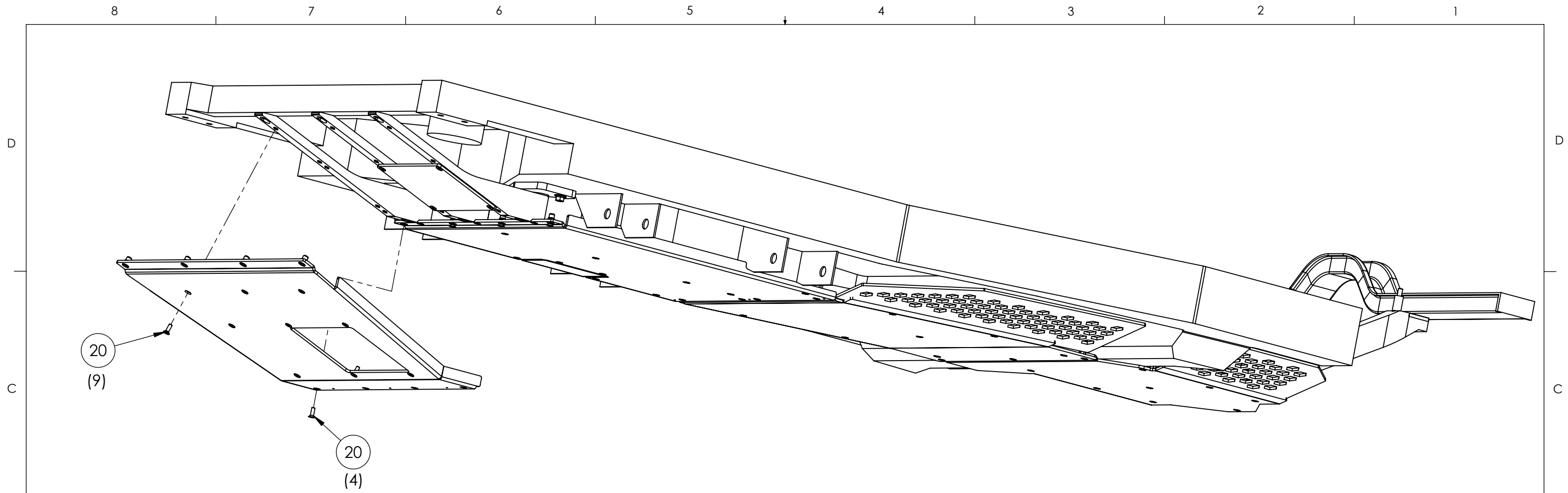
TIGHTEN THE 3 FRONT SUPPORT BOLTS IN DETAIL D USE THE OIL FILTER ACCESS PANEL TO ALIGN SUPPORTS. THIS WILL REQUIRE REMOVING AND REINSTALLING ON BOTH SIDES.

TIGHTEN 3 BOLTS IN DETAIL E

REMOVE ENGINE SKID AND TIGHTEN REMAINING SUB FRAME BOLTS\SCREWS

INSTALL ENGINE SKID AND OIL DRAIN ACCESS PANEL TIGHTEN ALL SCREWS

UNLESS OTHERWISE SPECIFIED: ALL DIMENSIONS ARE IN INCHES		DESG: O.R.	8/9/23	E&E OFF-ROAD LAS VEGAS, NV	
TOLERANCES:		APV: E.A.	8/9/23		
DECIMALS	ANGULAR	MATL: N/A		SIZE	DWG. NO.
.X ±.1	± 1°	FNSH: N/A		B	200 SERIES SKIDS
.XX ±.01				SCALE: 1:8	WEIGHT: 74.82 5lbs
.XXX ±.005				SHEET 5 OF 8	
TOLERANCING PER ASME Y14.5				REV	E

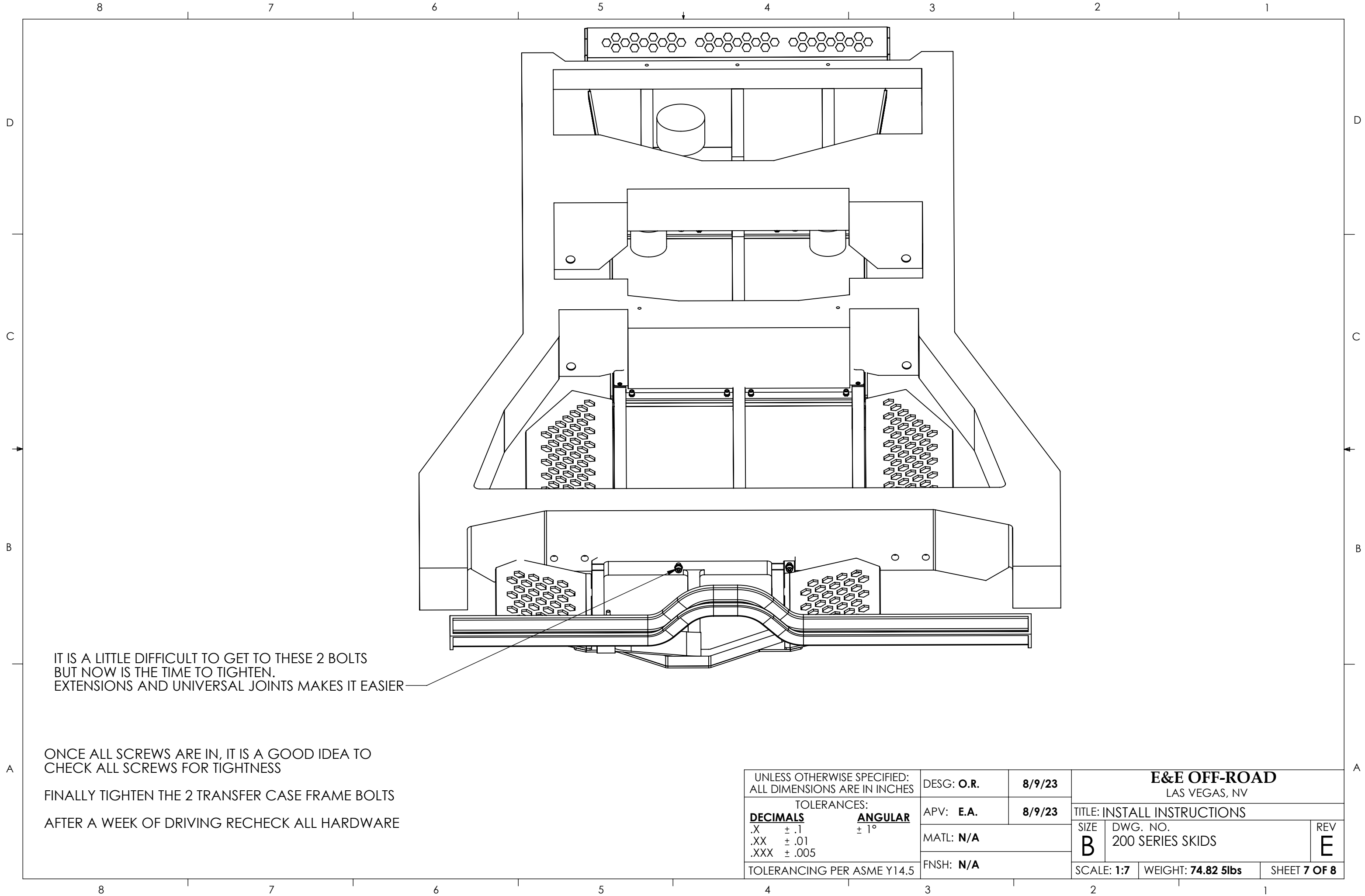


INSTALL FRONT SKID PLATE AND
HAND TIGHTEN 9 SCREWS

ONCE THE 9 SCREWS ARE IN, TIGHTEN
THEM

INSTALL THE 4 REMAINING SCREWS AND
TIGHTEN THEM

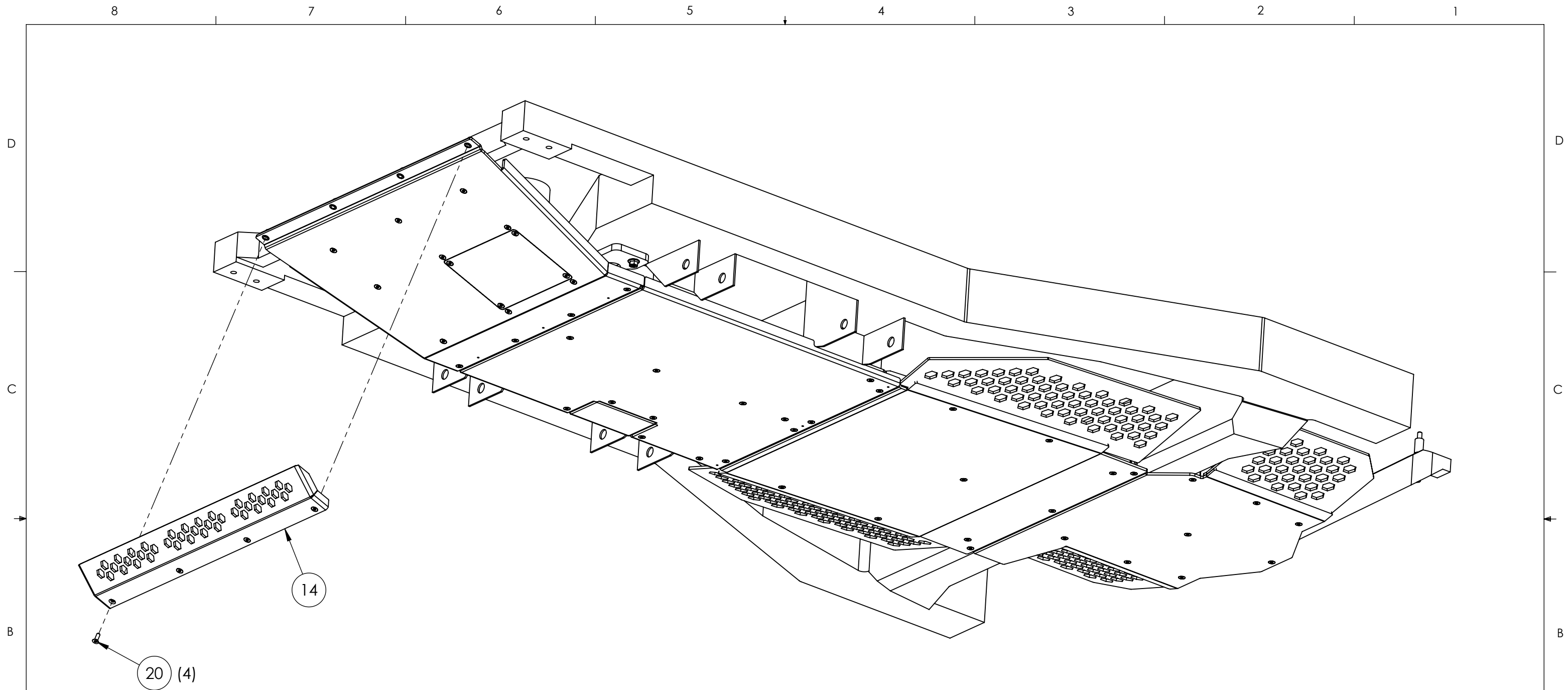
UNLESS OTHERWISE SPECIFIED: ALL DIMENSIONS ARE IN INCHES		DESG: O.R.	8/9/23	E&E OFF-ROAD LAS VEGAS, NV	
TOLERANCES:		APV: E.A.	8/9/23	TITLE: INSTALL INSTRUCTIONS	
DECIMALS	ANGULAR	MATL: N/A		SIZE B	DWG. NO. 200 SERIES SKIDS
.X ±.1	± 1°	FNSH: N/A		REV E	
.XX ±.01				SCALE: 1:7	WEIGHT: 74.82 5lbs
.XXX ±.005				SHEET 6 OF 8	
TOLERANCING PER ASME Y14.5					



IT IS A LITTLE DIFFICULT TO GET TO THESE 2 BOLTS
 BUT NOW IS THE TIME TO TIGHTEN.
 EXTENSIONS AND UNIVERSAL JOINTS MAKES IT EASIER

ONCE ALL SCREWS ARE IN, IT IS A GOOD IDEA TO
 CHECK ALL SCREWS FOR TIGHTNESS
 FINALLY TIGHTEN THE 2 TRANSFER CASE FRAME BOLTS
 AFTER A WEEK OF DRIVING RECHECK ALL HARDWARE

UNLESS OTHERWISE SPECIFIED: ALL DIMENSIONS ARE IN INCHES		DESG: O.R.	8/9/23	E&E OFF-ROAD LAS VEGAS, NV	
TOLERANCES:		APV: E.A.	8/9/23	TITLE: INSTALL INSTRUCTIONS	
DECIMALS	ANGULAR	MATL: N/A		SIZE B	DWG. NO. 200 SERIES SKIDS
.X ± .1	± 1°	FNSH: N/A		REV E	
.XX ± .01				SCALE: 1:7	WEIGHT: 74.82 5lbs
.XXX ± .005				SHEET 7 OF 8	
TOLERANCING PER ASME Y14.5					



IT IS OPTIONAL TO INSTALL THE POWER STEERING COOLER GUARD.

THIS REQUIRES REMOVING 2 BUMPER SKIN BRACKETS AND TRIMMING THE BUMPER.

UNLESS OTHERWISE SPECIFIED: ALL DIMENSIONS ARE IN INCHES		DESG: O.R.	8/9/23	E&E OFF-ROAD LAS VEGAS, NV	
TOLERANCES:		APV: E.A.	8/9/23	TITLE: INSTALL INSTRUCTIONS	
DECIMALS	ANGULAR	MATL: N/A		SIZE B	DWG. NO. 200 SERIES SKIDS
.X ±.1	± 1°	FNSH: N/A		REV E	
.XX ±.01				SCALE: 1:7	WEIGHT: 74.82 5lbs
.XXX ±.005				SHEET 8 OF 8	
TOLERANCING PER ASME Y14.5					